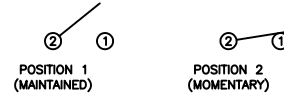
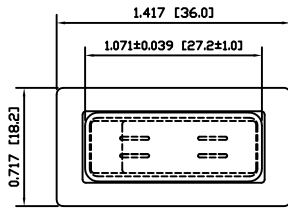


SCHEMATIC

SPECIFICATIONS



FUNCTION:  
1P1T OFF-(ON)

RATINGS:  
ANSI/UL 1054 and CAN/CSA C22.2 No. 55 (E194579):  
20A 125VAC [cURus]  
16A 250VAC [cURus]  
3/4HP 125/250VAC [cURus]

ANSI/UL 1054 (233821):  
16A 250VAC [CSAus]  
3/4HP 125/250VAC [CSAus]

EN 61058-1:2002 and DIN/VDE 0630:2003-03 (40017926):  
16(4)A 250V~ 1E4 μ T85/55 [ENEC10, VDE]  
10(2)A 250V~ 5E4 μ T85/55 [ENEC10, VDE]  
20(8)A 250V~ 1E4 μ T125/55 [ENEC10, VDE]

CONTACT RESISTANCE:  
Initial: 20mΩ Max.

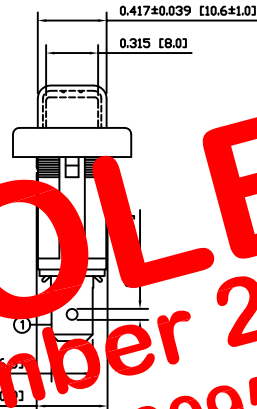
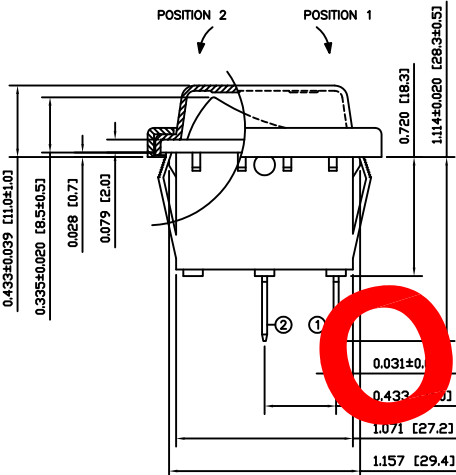
INSULATION RESISTANCE:  
100MΩ Min. at 500VDC

DIELECTRIC STRENGTH:  
1,000VAC for 1 Minute

ELECTRICAL LIFE:  
6,000 Cycles [cURus, CSAus]  
10,000 Cycles [ENEC10, VDE: 16(4)A 250V~]  
50,000 Cycles [ENEC10, VDE: 10(2)A 250V~]

TEMPERATURE:  
Operating: -20°C to 65°C [cURus, CSAus]  
Operating: -20°C to 125°C [ENEC10, VDE]  
Operating: -20°C to 85°C [ENEC10, VDE]

APPROVALS:



**OBSOLETE**  
 November 2017  
 PCR 23095

COLORS AND MARKINGS

BODY:  
Black

ACTUATOR:  
Black

MARKINGS:  
None

MARKING COLOR:  
None

FRAME:  
Black

MATERIALS

BODY:  
Polyamide 6/6 (PA66), UL94 V-2

ACTUATOR:  
Polyamide 6/6 (PA66), UL94 V-2

SPRING:  
Steel

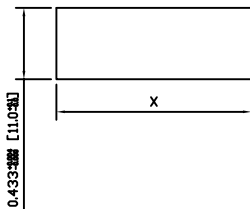
CONTACTS:  
Silver Plated Copper

TERMINALS:  
Silver Plated Copper  
Silver Plated Brass

CAP:  
Polyvinyl Chloride (PVC)

FRAME:  
Polyamide 6/6 (PA66), UL94 V-2

SUGGESTED PANEL CUTOUT



PANEL THICKNESS	X
0.030~0.049 [0.75~1.25]	1.189 [30.2]
0.049~0.079 [1.25~2.00]	1.201 [30.5]

ACTUATOR	A	09/07/08	CAB
BODY	A	09/07/08	CAB
COLORS	A	10/02/19	CAB
MATERIALS	A	09/07/27	CAB
SPECIFICATIONS	A	09/06/26	CAB
REFERENCE	REV.	DATE	BY

THE INFORMATION CONTAINED IN THIS DOCUMENT IS PROPRIETARY TO E-SWITCH AND IS NOT TO BE COPIED OR TRANSFERRED

A	INITIAL RELEASE	18992	10/02/22	CAB
REV.	DESCRIPTION	PCR	DATE	DRAWN BY

DIMENSIONS	TITLE
INCHES [MILLIMETERS]	RB144D1100/ACC-F01-1
GENERAL TOLERANCES	
±0.008 [±0.2] / ±1'	
SCALE	PROJECTION
DRAWING NOT TO SCALE	

ITEM NUMBER: 14-RB1S00097  
DATE: FEBRUARY 22, 2010  
REVISION: A